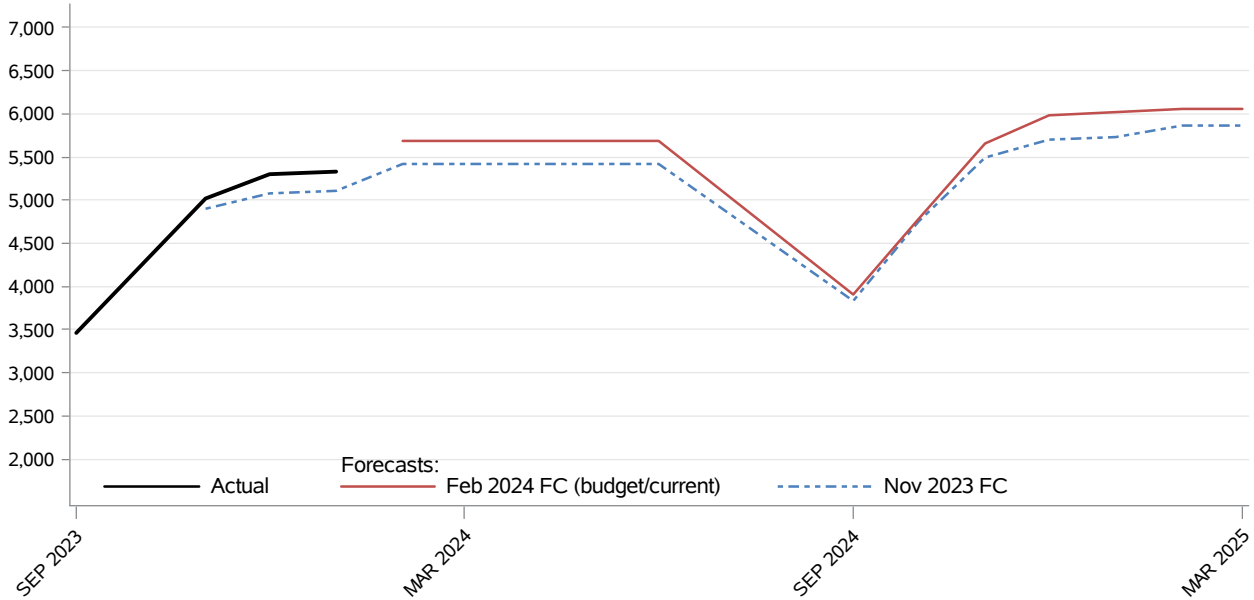


## Public Education Transition\_to\_Kindergarten CFC Monthly Monitoring Report

The **Transition to Kindergarten (TK)** is a new program established by passage of HB 1550 during the 2023 session. The new law codified and renamed the Transitional Kindergarten program the Transition to Kindergarten (TK) program. Previously, students were counted in kindergarten. Under the new law, as of the 2023-24 school year, TK students are reported separately as TK enrollment. Under HB 1550, the goal of the TK program is to assist eligible children in need of additional preparation to be successful kindergarten students in the following school year. Note the historical actuals in the chart above are transitional kindergarten students reported in kindergarten.



Month	Actual	Forecasts		Budget/Current Forecast and Variance		
		Nov 2023	Feb 2024	Feb 2024	N	%
SEP 2023	3,465					
OCT 2023	4,237					
NOV 2023	5,021	4,894				
DEC 2023	5,298	5,075				
JAN 2024	5,336	5,107				
FEB 2024		5,423	5,682	5,682		
MAR 2024		5,423	5,682	5,682		
APR 2024		5,421	5,682	5,682		
MAY 2024		5,421	5,682	5,682		
JUN 2024		5,421	5,682	5,682		

Data Source: Superintendent of Public Instruction (SPI) (last update: 02/13/2024)

**Public Education**  
**Transition\_to\_Kindergarten**  
CFC Monthly Monitoring Report

Descriptions:

- **Actual:** October headcount in Transition to Kindergarten.
- **Budget Forecast:** Caseload forecast adopted by the Caseload Forecast Council to serve as the basis for the biennial or supplemental budget. The actual budget may incorporate adjustments to this forecast to reflect legislation and policy decisions by the legislature subsequent to the development of the forecast.
- **Current Forecast:** Most recent forecast adopted by the Caseload Forecast Council; may be the same as the Budget Forecast.

**Disclaimer of Liability:**

Although the Washington State Caseload Forecast Council does all that it can to assure the accuracy of its forecasts and the data on which its forecasts are based, no warranty expressed or implied is made regarding accuracy, adequacy, completeness, legality, reliability, or usefulness of any information contained herein. This disclaimer applies to both isolated and aggregate uses of the information. If you find any errors or omissions, we encourage you to report them to the Caseload Forecast Council.