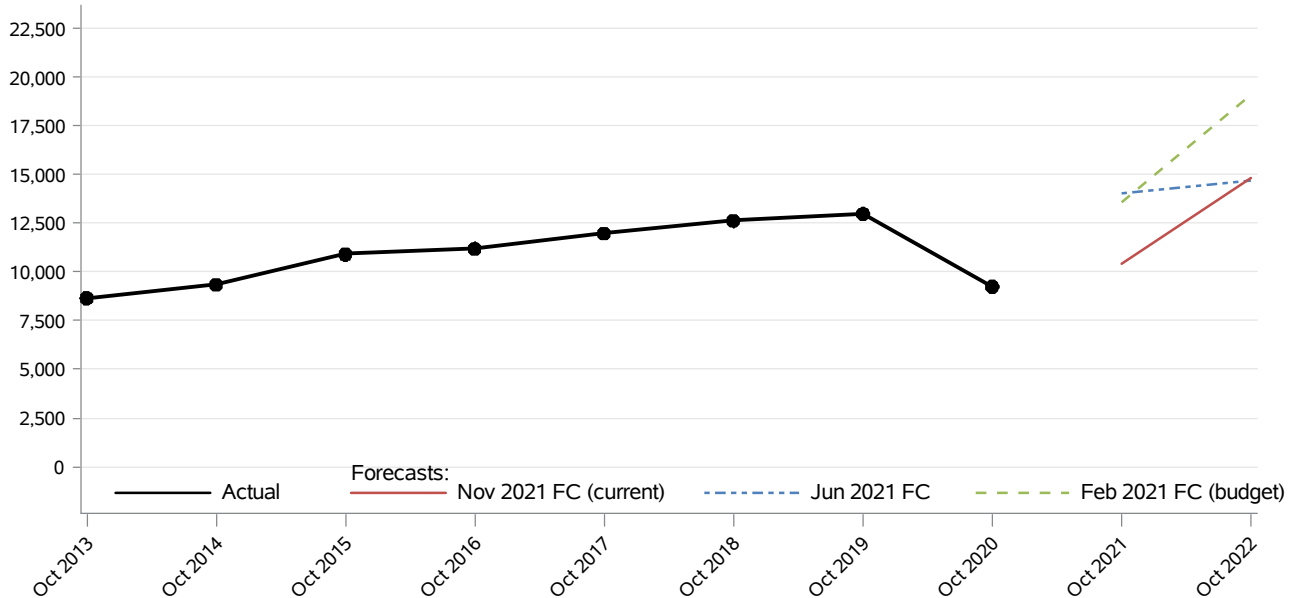


## Department of Early Learning Early Childhood Education and Assistance Program (ECEAP) CFC Monthly Monitoring Report

**ECEAP** (Early Childhood Education and Assistance Program) is a comprehensive preschool program that provides services and support to eligible children and their families to enhance their opportunities for success in the common school system.



Month	Actual	Forecasts			Budget Forecast and Variance			Current Forecast and Variance		
		Feb 2021	Jun 2021	Nov 2021	Feb 2021	N	%	Nov 2021	N	%
Oct 2013	8,668									
Oct 2014	9,361									
Oct 2015	10,921									
Oct 2016	11,210									
Oct 2017	11,991									
Oct 2018	12,636									
Oct 2019	12,999									
Oct 2020	9,256									
Oct 2021		13,564	14,026	10,398	13,564			10,398		
Oct 2022		19,109	14,720	14,817	19,109			14,817		

Data Source: Department of Early Learning (DEL) (last update: 11/05/2021)

**Department of Early Learning**  
**Early Childhood Education and Assistance Program (ECEAP)**  
CFC Monthly Monitoring Report

Descriptions:

- **Actual:** October enrollment in ECEAP.
- **Budget Forecast:** Caseload forecast adopted by the Caseload Forecast Council to serve as the basis for the biennial or supplemental budget. The actual budget may incorporate adjustments to this forecast to reflect legislation and policy decisions by the legislature subsequent to the development of the forecast.
- **Current Forecast:** Most recent forecast adopted by the Caseload Forecast Council; may be the same as the Budget Forecast.

**Special Notes:**

The chart and tables present the October Enrollment, while the official caseload forecast is 10-month annual average. The October enrollment is used here because it allows the display of the current year before the annual average is available and because the October enrollment is used to forecast future school years. The October enrollment will differ from the annual average, but is typically a reasonable proxy for the final 10-month annual average.

**Disclaimer of Liability:**

Although the Washington State Caseload Forecast Council does all that it can to assure the accuracy of its forecasts and the data on which its forecasts are based, no warranty expressed or implied is made regarding accuracy, adequacy, completeness, legality, reliability, or usefulness of any information contained herein. This disclaimer applies to both isolated and aggregate uses of the information. If you find any errors or omissions, we encourage you to report them to the Caseload Forecast Council.