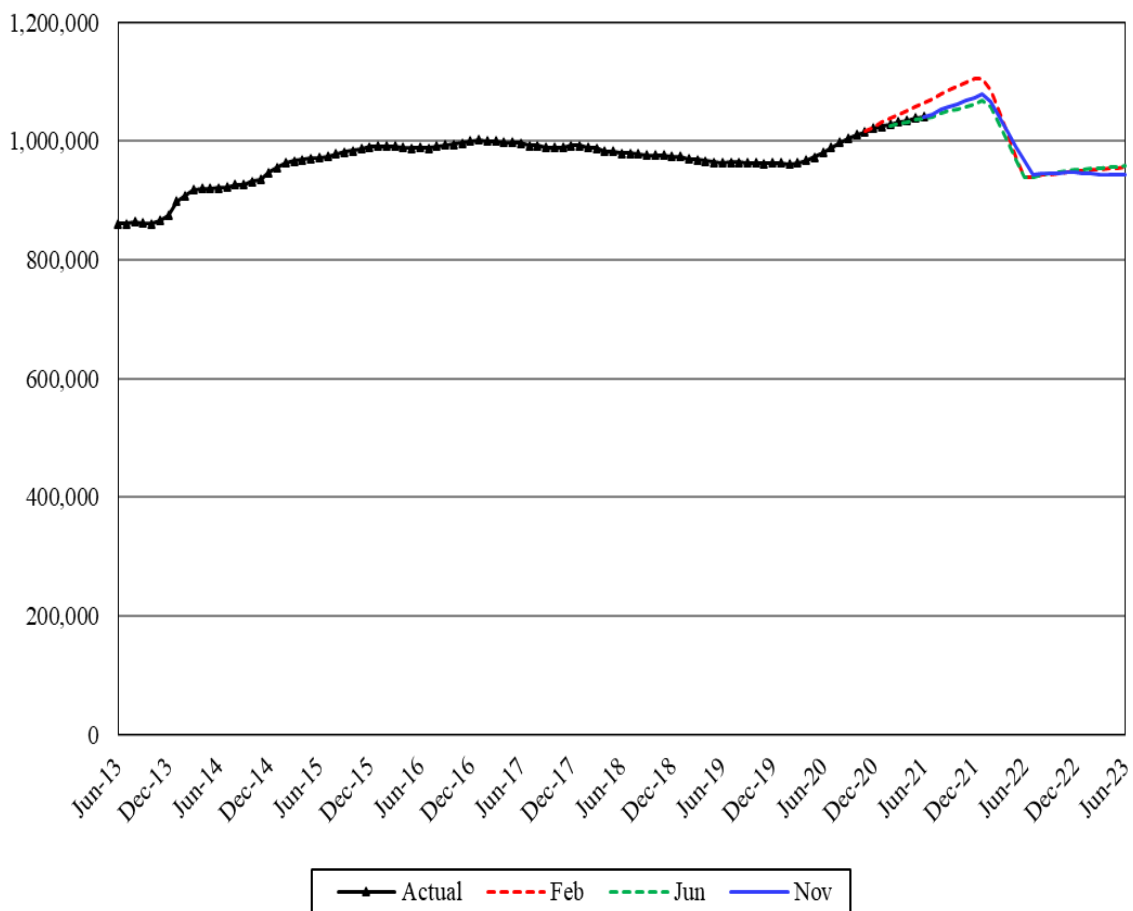


# Medical Assistance Adult Caretakers and Children

Caseload Forecast Council  
November 9, 2021

Medical Assistance for Adult Caretakers and Children



The Medical Assistance for Adult Caretakers and Children category is composed of seven caseloads for parents/caretakers, pregnant clients, and children by citizenship and income level.

### Forecast Comparisons (Fiscal Year Averages)

Fiscal Year	Feb-21 Forecast	Jun-21 Forecast	Nov-21 Forecast	Feb to Nov Difference	Percent Difference	Jun to Nov Difference	Percent Difference
2022	1,058,343	1,031,023	1,043,180	-15,163	-1.4%	12,157	1.2%
2023	949,250	950,814	945,195	-4,055	-0.4%	-5,619	-0.6%

The November 2021 forecast is, on average, 9,609 cases or 1.0 percent lower than the February forecast, and 3,269 or 0.3 percent higher than the June forecast for the 2021-23 Biennium.

Forecast Contact:  
Shidong Zhang  
360-664-9370  
Shidong.zhang@cfc.wa.gov

### Tracking the Current Forecast

	Jun-21 Forecast	Actual	Variance	Percent Variance
Mar-21	1,028,891	1,032,218	3,327	0.3%
Apr-21	1,032,562	1,035,260	2,698	0.3%
May-21	1,035,390	1,039,320	3,930	0.4%
Jun-21	1,038,671	1,041,686	3,015	0.3%

Actuals are tracking, on average, 3,243 cases or 0.3 percent higher than the June 2021 forecast.

During the Public Health Emergency (PHE) period, the Health Care Authority (HCA) cannot terminate a client's eligibility except for a few exemptions according to the Families First Coronavirus Response Act (FFCRA), resulting in a continuous increase in this caseload and historically low uninsured rate. On the other hand, it also reduced new enrollments and the related potential client pool. The November forecast changed the PHE end month assumption from December 2021 to January 2022. In addition, this forecast modified the SB 5068 step to reflect the historical pregnant women and family planning caseload data adjustments.

After the PHE, we expect large caseload drops in the following six months when HCA starts to process the postponed cases according to the federal requirement.

### Fiscal Year Caseload Change

	Fiscal Year	Caseload	Change from Prior Year	Percent Change
Actual	2014	889,927		
	2015	949,134	59,207	6.7%
	2016	986,456	37,322	3.9%
	2017	996,905	10,449	1.1%
	2018	988,474	-8,431	-0.8%
	2019	972,693	-15,781	-1.6%
	2020	966,065	-6,628	-0.7%
	2021	1,020,249	54,184	5.6%
Forecast	2022	1,043,180	22,930	2.2%
	2023	945,195	-97,985	-9.4%

Recent caseload growth is not stable mainly due to improvements in the post eligibility review process and residency checks. In the following years, this caseload will continue to be impacted by COVID-19 and related policy changes.

#### *Risks to the Forecast*

Risks to this forecast are moderate to high because of the uncertainties of the COVID-19 impact and corresponding economic and policy impacts, and uncertainty of the post PHE eligibility processing. In addition, the November forecast does not incorporate a step adjustment for Afghan refugees, but the impact would not be significant.

*Forecast Contact:*  
Shidong Zhang  
360-664-9370  
Shidong.zhang@cfc.wa.gov