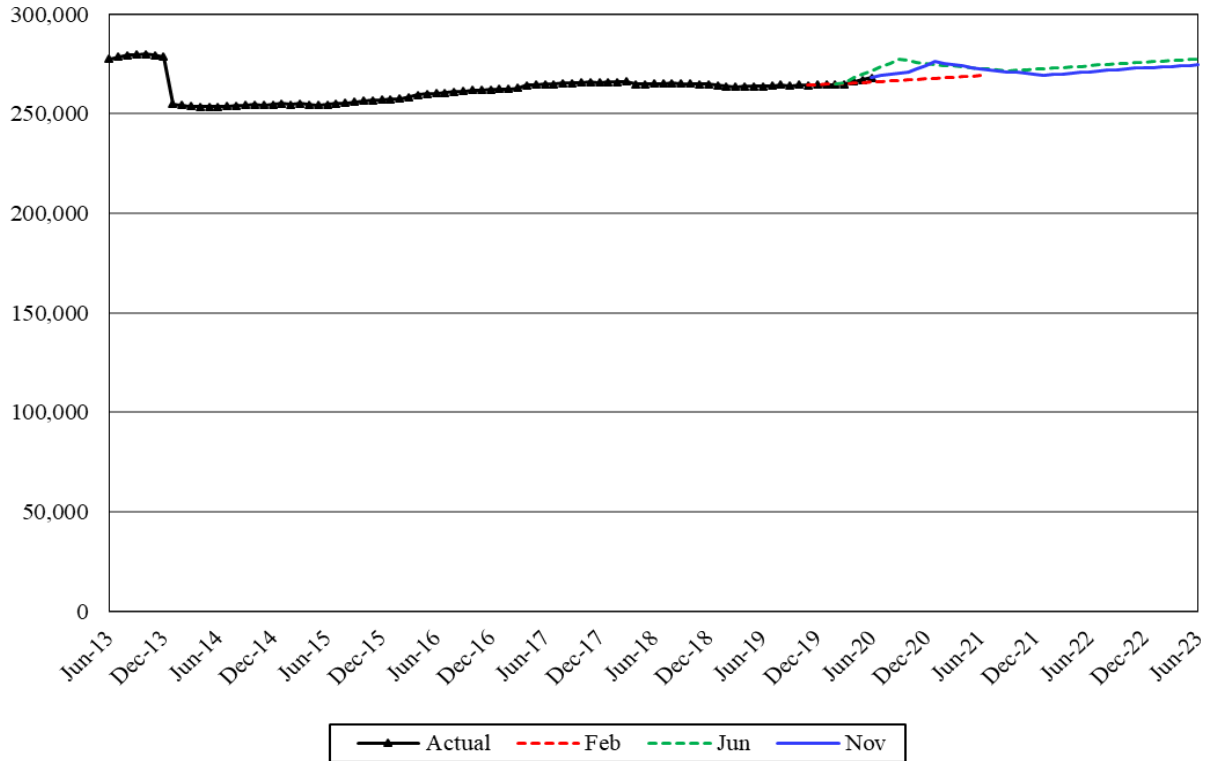


Medical Assistance Aged, Disabled and Other Medical

Caseload Forecast Council
November 10, 2020

Aged, Disabled and Other Medical



The forecast for Aged, Disabled and Other Medical is composed of nine component forecasts: Categorically Needy (CN) Aged, CN Disabled, Medically Needy (MN) Aged, MN Disabled, Breast and Cervical Cancer Treatment (BCCT), Healthcare for Workers with Disabilities (HWD), Qualified Medicare Beneficiaries (QMB), MCS Alien Medical, and Alien Emergency Medical (AEM).

Forecast Comparisons (Fiscal Year Averages)

| Fiscal Year | Feb-20 Forecast | Jun-20 Forecast | Nov-20 Forecast | Feb to Nov Difference | Percent Difference | Jun to Nov Difference | Percent Difference |
|-------------|-----------------|-----------------|-----------------|-----------------------|--------------------|-----------------------|--------------------|
| 2021 | 267,729 | 274,767 | 272,736 | 5,007 | 1.9% | -2,031 | -0.7% |
| 2022 | | 272,793 | 270,615 | | | -2,178 | -0.8% |
| 2023 | | 276,078 | 273,177 | | | -2,902 | -1.1% |

The November 2020 forecast is 5,007 cases or 1.9 percent higher than the February 2020 forecast for FY 2021 and, on average, 2,540 cases or 0.9 percent lower than the June 2020 forecast for the 2021-23 Biennium.

Forecast Contact:
Shidong Zhang
360-664-9370
Shidong.zhang@cfc.wa.gov

Tracking the Current Forecast

| | Jun-20 Forecast | Actual | Variance | Percent Variance |
|--------|--------------------|---------|----------|---------------------|
| Mar-20 | 265,488 | 264,844 | -644 | -0.2% |
| Apr-20 | 268,041 | 266,225 | -1,815 | -0.7% |
| May-20 | 269,797 | 267,176 | -2,621 | -1.0% |
| Jun-20 | 271,751 | 268,115 | -3,637 | -1.3% |

Actuals have been tracking, on average, 2,179 cases or 0.8 percent below the June 2020 forecast for the past four months. These variances are potentially overstated because some clients' eligibility reinstatements are pending.

The November 2020 forecast change is mainly due to the progression of the COVID-19 impact and related policy changes at both the federal and state levels. The November forecast modifies the forecast model by incorporating the COVID-19 experience in the past months. An important change is that the federal Public Health Emergency (PHE) period is extended from September 2020 to January 2021.

Fiscal Year Caseload Change

| | Fiscal Year | Caseload | Change from Prior Year | Percent Change |
|-----------------|-------------|----------|---------------------------|-------------------|
| <i>Actual</i> | 2014 | 266,632 | | |
| | 2015 | 254,527 | -12,105 | -4.5% |
| | 2016 | 257,527 | 3,000 | 1.2% |
| | 2017 | 262,554 | 5,028 | 2.0% |
| | 2018 | 265,525 | 2,971 | 1.1% |
| | 2019 | 264,471 | -1,054 | -0.4% |
| | 2020 | 265,150 | 679 | 0.3% |
| <i>Forecast</i> | 2021 | 272,736 | 7,586 | 2.9% |
| | 2022 | 270,615 | -2,121 | -0.8% |
| | 2023 | 273,177 | 2,561 | 0.9% |

The caseload growth has been relatively stable in recent years except for a negative growth in FY 2019 due to an eligibility system cleanup impacting QMB. In the following years, this caseload will be impacted by the COVID-19 policy changes and then is expected to return to the old caseload trajectory.

Risks to the Forecast

Risks to this forecast are high because of the uncertainty of the COVID-19 impact and corresponding economic impacts and policy impacts.