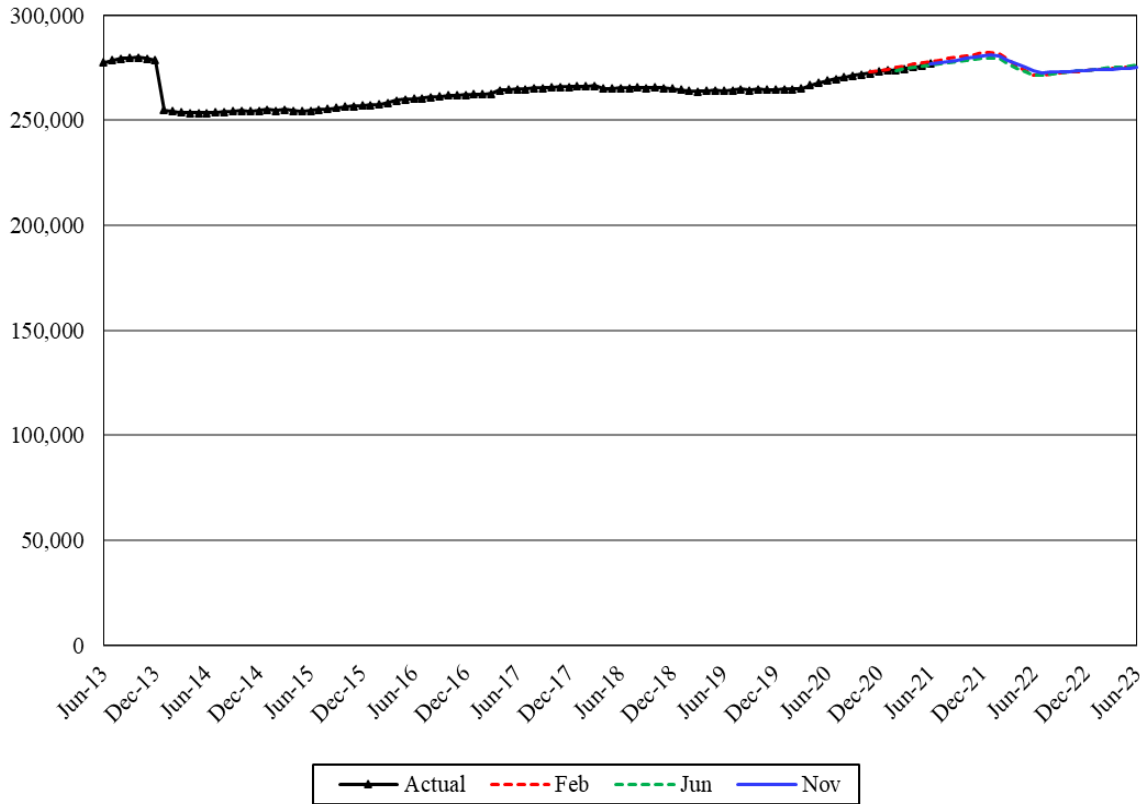


Medical Assistance Aged, Disabled and Other Medical

Caseload Forecast Council
November 9, 2021

Aged, Disabled and Other Medical



The forecast for Aged, Disabled and Other Medical is composed of nine component forecasts: Categorically Needy (CN) Aged, CN Disabled, Medically Needy (MN) Aged, MN Disabled, Breast and Cervical Cancer Treatment (BCCT), Healthcare for Workers with Disabilities (HWD), Qualified Medicare Beneficiaries (QMB), MCS Alien Medical, and Alien Emergency Medical (AEM).

Forecast Comparisons (Fiscal Year Averages)

Fiscal Year	Feb-21 Forecast	Jun-21 Forecast	Nov-21 Forecast	Feb to Nov Difference	Percent Difference	Jun to Nov Difference	Percent Difference
2022	278,835	277,109	278,395	-440	-0.2%	1,287	0.5%
2023	273,752	274,039	273,857	106	0.0%	-182	-0.1%

The November 2021 forecast is, on average, 167 cases or 0.1 percent lower than the February forecast, and 552 or 0.2 percent higher than the June forecast for the 2021-23 Biennium.

Forecast Contact:
Shidong Zhang
360-664-9370
Shidong.zhang@cfc.wa.gov

Tracking the Current Forecast

	Jun-21 Forecast	Actual	Variance	Percent Variance
Mar-21	274,864	274,612	-253	-0.1%
Apr-21	275,233	275,294	60	0.0%
May-21	275,780	276,032	252	0.1%
Jun-21	276,368	277,020	652	0.2%

Actuals are tracking, on average, 178 cases or 0.1 percent higher than the June 2021 forecast.

During the Public Health Emergency (PHE) period, the Health Care Authority (HCA) cannot terminate a client’s eligibility except for a few exemptions according to the Families First Coronavirus Response Act (FFCRA), resulting in a continuous increase in this caseload and historically low uninsured rate. On the other hand, it also reduces new enrollments and the related potential client pool. The November forecast changed the PHE end month assumption from December 2021 to January 2022.

After the PHE, we expect large caseload drops in the following six months when HCA starts to process the postponed cases according to the federal requirement.

Fiscal Year Caseload Change

	Fiscal Year	Caseload	Change from Prior Year	Percent Change
<i>Actual</i>	2014	266,627		
	2015	254,524	-12,103	-4.5%
	2016	257,520	2,996	1.2%
	2017	262,541	5,021	1.9%
	2018	265,617	3,076	1.2%
	2019	264,827	-791	-0.3%
	2020	265,464	637	0.2%
<i>Forecast</i>	2021	273,339	7,875	3.0%
	2022	278,395	5,056	1.8%
	2023	273,857	-4,538	-1.6%

The caseload growth has been relatively stable in recent years except for a negative growth in FY 2019 due to an eligibility system cleanup impacting QMB. In the following years, this caseload will continue to be impacted by COVID-19 and related policy changes.

Risks to the Forecast

Risks to this forecast are moderate to high because of the uncertainties of the COVID-19 impact and corresponding economic and policy impacts, and uncertainty of the post PHE eligibility processing. In addition, the November forecast doesn’t incorporate a step adjustment for Afghan refugees, but the impact would not be significant.