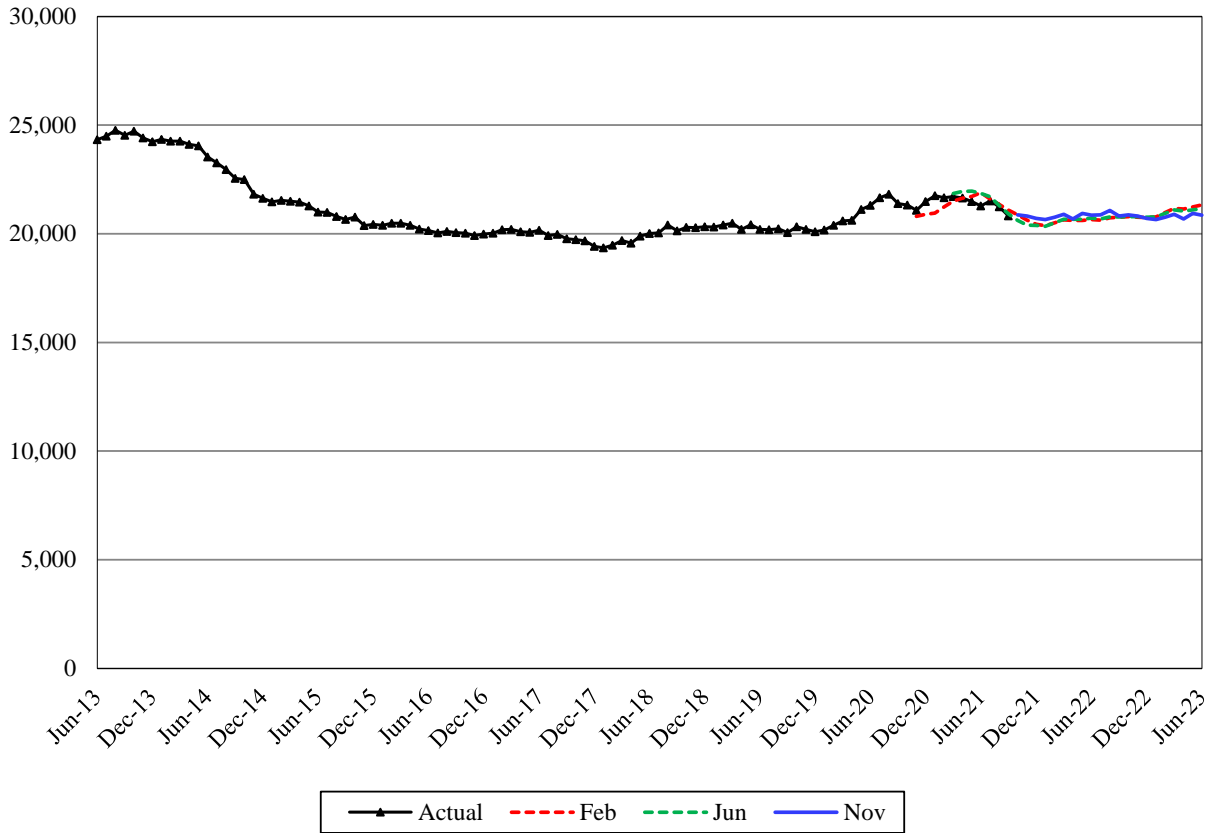


Economic Services Administration

Aged, Blind and Disabled Assistance Grant

Caseload Forecast Council
November 9, 2021

Aged, Blind and Disabled Assistance Grant Program – Total Caseload



The Aged, Blind and Disabled Assistance program (ABD) provides financial assistance to persons whose long-term mental and/or physical disabilities likely qualify them for the federal Supplemental Security Income (SSI) program, regardless of citizenship status. This forecast includes three components: Presumptive SSI, Aged, and Disabled.

Forecast Comparisons (Fiscal Year Averages)

Fiscal Year	Feb-21 Forecast	Jun-21 Forecast	Nov-21 Forecast	Feb to Nov Difference	Percent Difference	Jun to Nov Difference	Percent Difference
2022	20,781	20,740	20,898	117	0.6%	158	0.8%
2023	20,921	20,891	20,828	-93	-0.4%	-63	-0.3%

The November 2021 forecast is 48 cases or 0.2 percent higher than the June 2021 forecast for the 2021-23 Biennium.

Tracking the Current Forecast

	Jun-21			Percent
	Forecast	Actual	Variance	Variance
Mar-21	21,852	21,714	-139	-0.6%
Apr-21	21,956	21,648	-309	-1.4%
May-21	21,966	21,489	-476	-2.2%
Jun-21	21,861	21,287	-574	-2.6%
Jul-21	21,708	21,518	-190	-0.9%
Aug-21	21,291	21,240	-51	-0.2%
Sep-21	20,917	20,828	-88	-0.4%

Actuals have been tracking, on average, 261 cases or 1.2 percent below the June 2021 forecast for the past seven months.

The June forecast incorporated the eligibility review and mid-certification review (ER/MCR) processing changes implemented in November 2020. Those changes are almost complete, and this forecast assumes that they are included in the underlying trend in the recent actuals.

Fiscal Year Caseload Change

	Fiscal Year	Caseload	Change from Prior Year	Percent Change
<i>Actual</i>	2014	24,309		
	2015	21,914	-2,395	-9.9%
	2016	20,512	-1,402	-6.4%
	2017	20,075	-437	-2.1%
	2018	19,707	-368	-1.8%
	2019	20,293	586	3.0%
	2020	20,442	149	0.7%
	2021	21,527	1,086	5.3%
<i>Forecast</i>	2022	20,898	-630	-2.9%
	2023	20,828	-69	-0.3%

The ABD growth rate exhibits large volatility. This is mainly due to:

1. HB 2667 that provided for a client to receive both the ABD program and the Essential Needs and Housing Support program (HEN) assistance concurrently while an application for federal SSI benefits is pending.
2. HB1831 that increased resources exempted when determining eligibility for public assistance.
3. COVID-19 and related policy changes.

Risks to the Forecast

The risks to the forecast are moderate. The risks are mainly due to the uncertainties of the COVID-19 impact and corresponding policy changes.

Forecast Contact:
 Erik Cornellier
 360-664-9375
 erik.cornellier@cfc.wa.gov