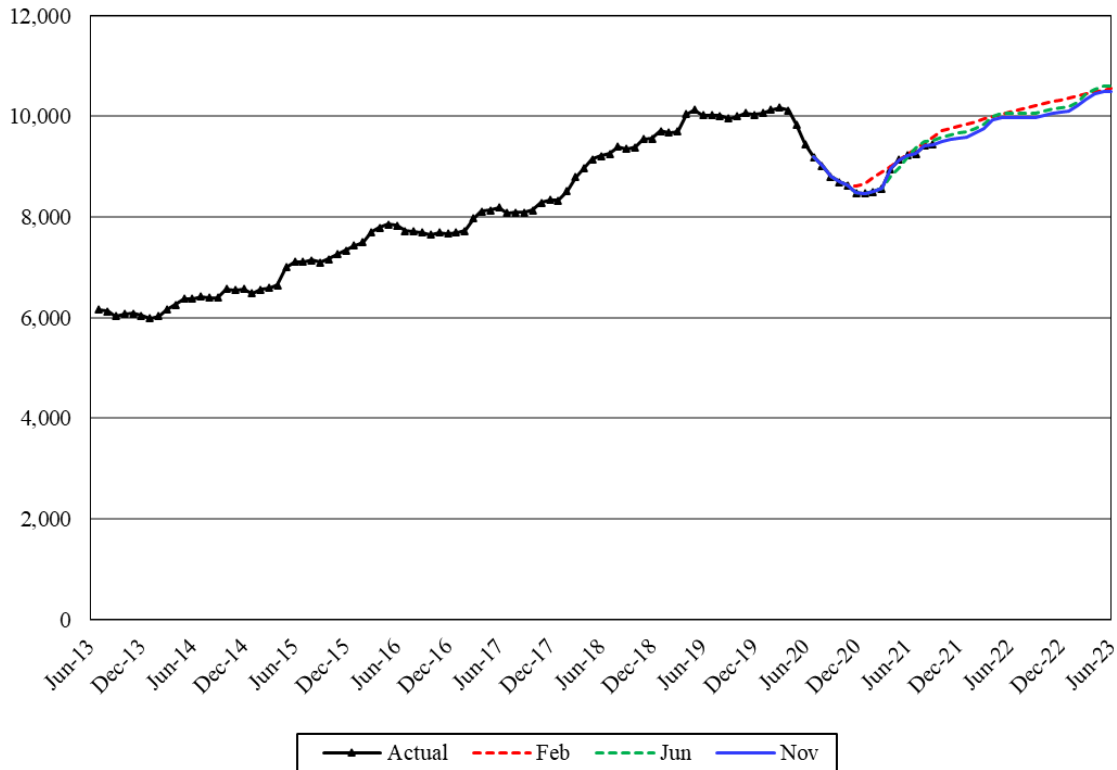


Early Support for Infants and Toddlers (ESIT) (Unofficial Courtesy Forecast)



The Early Support for Infants and Toddlers program (ESIT) coordinates and provides services for eligible infants and toddlers and is administered by the Department of Children, Youth, and Families (DCYF). The ESIT caseload is defined as the number of children with active Individualized Family Service Plans (IFSPs). Children are evaluated and become eligible if found to have specific developmental delays. As of September 1, 2020, ESIT includes state funded services previously provided through Special Education Birth to Age 2.

Forecast Comparisons (Fiscal Year Averages)

Fiscal Year	Feb-21 Forecast	Jun-21 Forecast	Nov-21 Forecast	Feb to Nov Difference	Percent Difference	Jun to Nov Difference	Percent Difference
2022	9,792	9,724	9,637	-155	-1.6%	-87	-0.9%
2023	10,348	10,271	10,185	-163	-1.6%	-86	-0.8%

The November 2021 forecast is, on average, 159 cases or 1.6 percent lower than the February forecast, and 87 or 0.9 percent lower than the June forecast for the 2021-23 Biennium.

Tracking the Current Forecast

	Jun-21 Forecast	Actual	Variance	Percent Variance
Apr-21	8,800	8,957	157	1.8%
May-21	8,990	9,139	149	1.7%
Jun-21	9,180	9,225	45	0.5%
Jul-21	9,370	9,259	-111	-1.2%
Aug-21	9,495	9,418	-77	-0.8%
Sep-21	9,525	9,438	-87	-0.9%

On average, ESIT has tracked closely to the June forecast. However, since July, ESIT actuals have been 1.0 percent below forecast.

Academic Year Caseload Change

	Fiscal Year	Caseload	Change from Prior Year	Percent Change
<i>Actual</i>	2014	6,143		
	2015	6,609	466	7.6%
	2016	7,436	827	12.5%
	2017	7,832	396	5.3%
	2018	8,500	668	8.5%
	2019	9,649	1,149	13.5%
	2020	9,991	342	3.5%
	2021	8,808	-1,182	-11.8%
<i>Forecast</i>	2022	9,637	829	9.4%
	2023	10,185	548	5.7%

The COVID-19 pandemic resulted in a sharp decline in the ESIT caseload, starting in March of 2020. The program experienced reductions in entries and active participants. Referrals from pediatricians and pediatric service providers also declined. The decline reversed starting in January 2021, and growth returned as vaccines became available for providers and adult caregivers. In total, for FY 2021, the ESIT caseload declined by 11.8 percent due to COVID-19. In FY 2022 and 2023, the ESIT caseload is projected to grow, but at a lower rate than the pre-pandemic average. This is because the overall age 0 to 2 population is forecasted to decline due to drops in birth rates and fewer families moving into Washington State.

Risks to the Forecast

Risks to the November 2021 forecast are higher than normal as a result of uncertainty due to COVID-19 prevalence, access to pediatric vaccines, birth rates, and net in-state migration. Historically, changing birth rates and policy changes have most impacted this forecast.