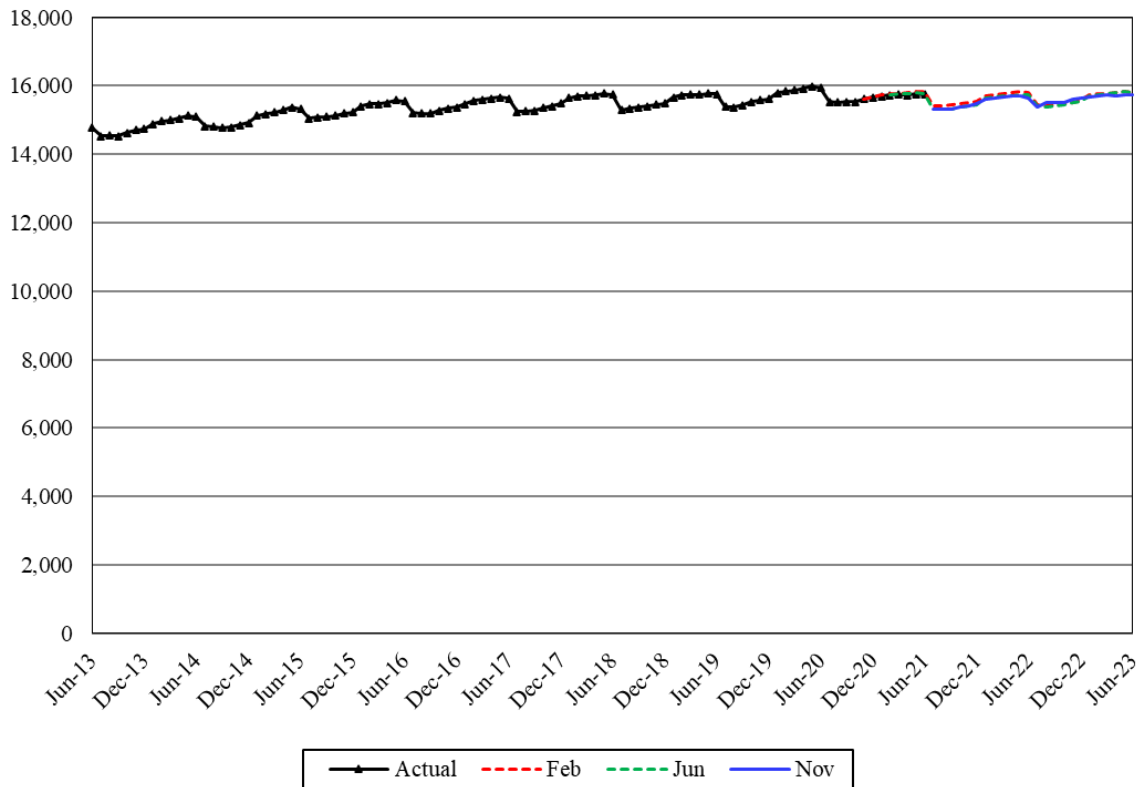


**Adoption Support – Maintenance Payments**



The Adoption Support Maintenance Payment (ASMP) caseload forecast is a forecast of those eligible adoptive families receiving monthly adoption support maintenance payments.

**Forecast Comparisons (Fiscal Year Averages)**

Fiscal Year	Feb-21 Forecast	Jun-21 Forecast	Nov-21 Forecast	Feb to Nov Difference	Percent Difference	Jun to Nov Difference	Percent Difference
2022	15,628	15,532	15,517	-111	-0.7%	-15	-0.1%
2023	15,636	15,620	15,628	-8	-0.1%	8	0.0%

The November 2021 forecast is, on average, 60 cases or 0.4% percent higher than the February forecast, and 4 cases or a negligible percentage higher than the June forecast for the 2021-23 Biennium.

### Tracking the Current Forecast

	Jun-21 Forecast	Actual	Variance	Percent Variance
Feb-21	15,728	15,728	0	0.0%
Mar-21	15,763	15,744	-19	-0.1%
Apr-21	15,757	15,738	-19	-0.1%
May-21	15,789	15,761	-28	-0.2%
Jun-21	15,769	15,742	-27	-0.2%

Actuals are tracking, on average, 19 cases or 0.1 percent lower than the June 2021 forecast. The November forecast incorporates an adjustment to reflect this observation.

### Fiscal Year Caseload Change

	Fiscal Year	Caseload	Change from Prior Year	Percent Change
<i>Actual</i>	2014	14,819		
	2015	15,043	224	1.5%
	2016	15,317	274	1.8%
	2017	15,432	115	0.8%
	2018	15,530	98	0.6%
	2019	15,566	36	0.2%
	2020	15,693	127	0.8%
	2021	15,655	-39	-0.2%
<i>Forecast</i>	2022	15,517	-138	-0.9%
	2023	15,628	111	0.7%

#### *Risks to the Forecast*

Risks to the ASMP forecast are low as it is a relatively stable caseload.