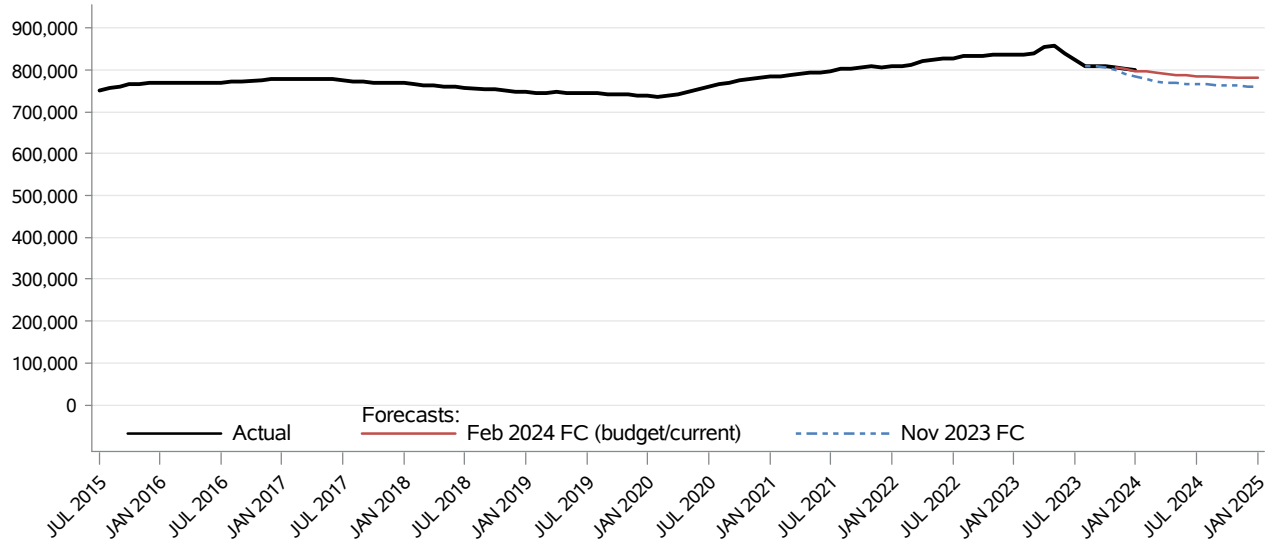


Medical Services Categorically Needy (CN) Children CFC Monthly Monitoring Report

The **Categorically Needy (CN) Children** program provides medical services to children under 200% of the Federal Poverty Level (FPL) who are not eligible for SSI.



Month	Actual	Forecasts		Budget/Current Forecast and Variance		
		Nov 2023	Feb 2024	Feb 2024	N	%
AUG 2023	810,705	810,721				
SEP 2023	809,430	808,564				
OCT 2023	808,515	805,048				
NOV 2023	806,576	801,179	805,297	805,297	1,279	0.2%
DEC 2023	802,620	792,297	801,844	801,844	776	0.1%
JAN 2024	798,896	783,608	798,581	798,581	315	0.0%
FEB 2024		779,087	796,283	796,283		
MAR 2024		773,764	793,028	793,028		
APR 2024		771,069	792,182	792,182		
MAY 2024		769,467	788,546	788,546		
JUN 2024		767,248	786,581	786,581		
JUL 2024		765,513	785,009	785,009		

Data Source: HCA Provider One (last update: 04/15/2024)

Medical Services
Categorically Needy (CN) Children
CFC Monthly Monitoring Report

Descriptions:

- **Actual:** The number of clients eligible at any time during the month and are lag adjusted up to 24 months and the most recent two months of data are not shown.
- **Budget Forecast:** Caseload forecast adopted by the Caseload Forecast Council to serve as the basis for the biennial or supplemental budget. The actual budget may incorporate adjustments to this forecast to reflect legislation and policy decisions by the legislature subsequent to the development of the forecast.
- **Current Forecast:** Most recent forecast adopted by the Caseload Forecast Council; may be the same as the Budget Forecast.

Disclaimer of Liability:

Although the Washington State Caseload Forecast Council does all that it can to assure the accuracy of its forecasts and the data on which its forecasts are based, no warranty expressed or implied is made regarding accuracy, adequacy, completeness, legality, reliability, or usefulness of any information contained herein. This disclaimer applies to both isolated and aggregate uses of the information. If you find any errors or omissions, we encourage you to report them to the Caseload Forecast Council.