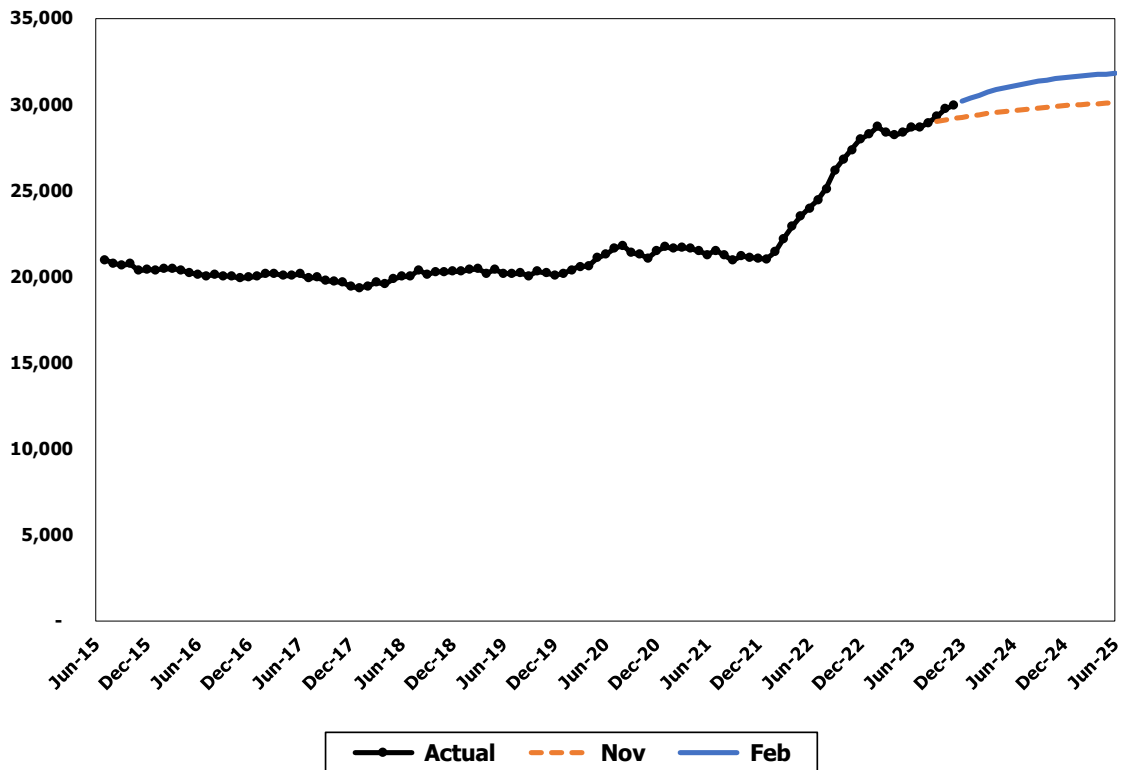


Aged, Blind and Disabled Assistance Grant Program – Total Caseload



The Aged, Blind and Disabled Assistance program (ABD) provides financial assistance to persons whose long-term mental and/or physical disabilities likely qualify them for the federal Supplemental Security Income (SSI) program, regardless of citizenship status. This forecast includes three components: Presumptive SSI, Aged, and Disabled.

Forecast Comparisons (Fiscal Year Averages)

Fiscal Year	Nov-23 Forecast	Feb-24 Forecast	Nov to Feb Difference	Percent Difference
2024	29,286	30,131	845	2.9%
2025	29,947	31,564	1,617	5.4%

The February 2024 forecast is, on average, 1,231 cases or 4.2 percent above than the November 2023 forecast for the 2023-25 Biennium. The variance in the current forecast is driven by the recent larger-than-normal number of immigrants utilizing ABD, especially ABD-Aged; the flow of immigrants is driven by a combination of worldwide social conditions and federal policy, both very hard to predict.

Tracking the Current Forecast

Month	Nov-23		Variance	Percent
	Forecast	Actual		Variance
Sep-23	29,036	29,340	304	1.0%
Oct-23	29,133	29,770	637	2.2%
Nov-23	29,215	29,974	759	2.6%

Actuals are tracking, on average, 567 cases or 1.9 percent above the November forecast.

Fiscal Year Caseload Change

	Fiscal Year	Caseload	Change from Prior Year	Percent Change
Actual	2016	20,512		
	2017	20,075	-437	-2.1%
	2018	19,707	-368	-1.8%
	2019	20,293	586	3.0%
	2020	20,442	149	0.7%
	2021	21,529	1,087	5.3%
	2022	21,857	328	1.5%
	2023	27,387	5,530	25.3%
Forecast	2024	30,131	2,744	10.0%
	2025	31,564	1,432	4.8%

The 25.3% caseload increase in 2023 was due to caseload growth from March of 2022 to February 2023 in PSSI; this growth has mostly leveled off since March 2023 due to improved staffing conditions at DSHS.

Risks to the Forecast

The risks to the forecast are moderate. There is also a risk due to high levels of Ukrainian refugees over 65 in Refugee Cash Assistance (RCA) who are nearing the end of their 12 months of RCA eligibility or entering the ABD Aged caseload. This caseload is heavily impacted by changing economic conditions.