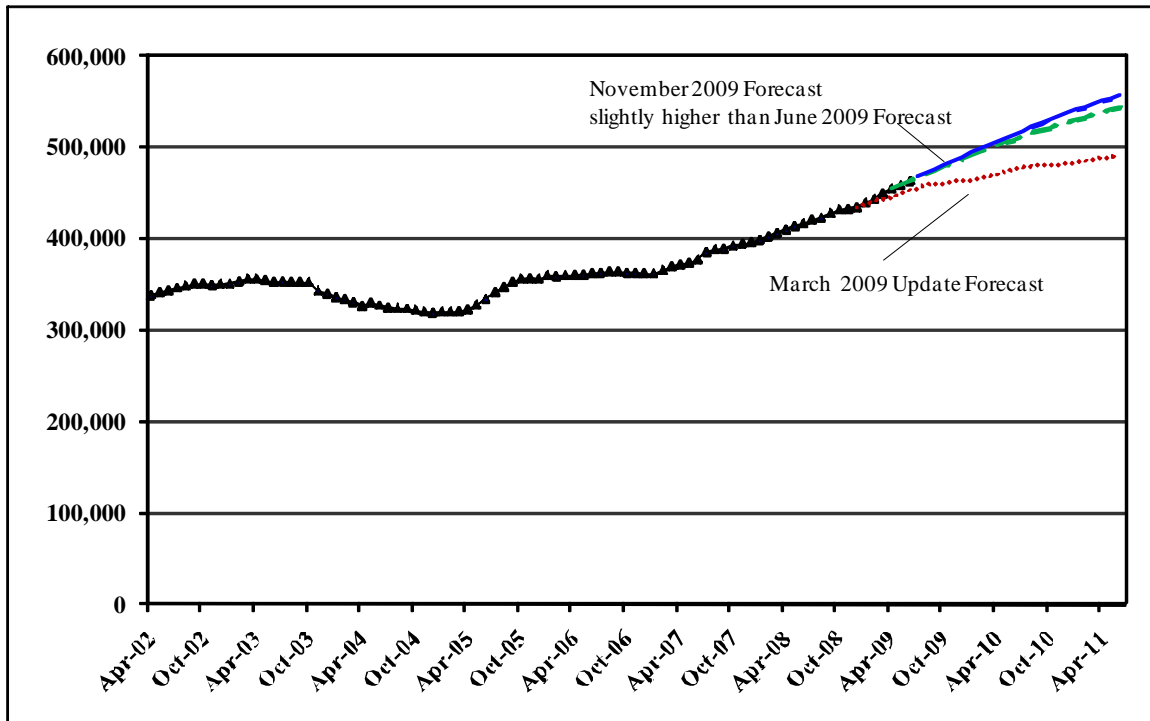


# Health and Recovery Services Administration (HRSA)

Caseload Forecast Council  
November 13, 2009

## Medical Assistance for Children



The Medical Assistance for Children’s forecast is composed of three component forecasts: Categorically Needy (CN) Other Children, a Medicaid program for children below 200% of the Federal Poverty Level (FPL), the State Children’s Health Program (SCHIP) for children between 200 and 300% of the FPL, and the Children’s Health Program (CHP), for non-citizen children below 300% of the FPL.

### Forecast Comparisons (Fiscal Year Averages)

Fiscal Year	Mar-09 Update	Jun-09 Forecast	Nov-09 Forecast	Mar Update-to-Nov Difference	Percent Difference	Jun-to-Nov Difference	Percent Difference
2010	464,311	487,575	490,662	26,351	5.7%	3,087	0.6%
2011	483,567	527,904	537,988	54,421	11.3%	10,084	1.9%

As with the forecast for medical assistance for families, the June forecast for medical assistance for children was revised up dramatically from the March forecast. This revision was due almost entirely to weakening economic conditions combined with continued outreach to eligible but uninsured children. Since June the economy appears to have stabilized, although the unemployment rate is not expected to fall significantly until Fiscal Year 2011. In contrast to the forecast for medical programs for families, the growth rate of medical assistance for children is not expected to decline much with the recovery. These programs cover children in families up to 300% of the FPL, so it is expected that children will remain in the program even after their parents become employed.

### Tracking the Current Forecast

	Jun-09 Forecast	Actual	Variance	Percent Variance
Apr-09	454,276	453,850	-426	-0.1%
May-09	458,155	457,899	-256	-0.1%
Jun-09	462,086	462,905	819	0.2%

Although current tracking is just slightly above the June forecast, underlying trends in entry, exit, and transfer rates indicate that the variance will grow over the coming biennia.

### Fiscal Year Caseload Change

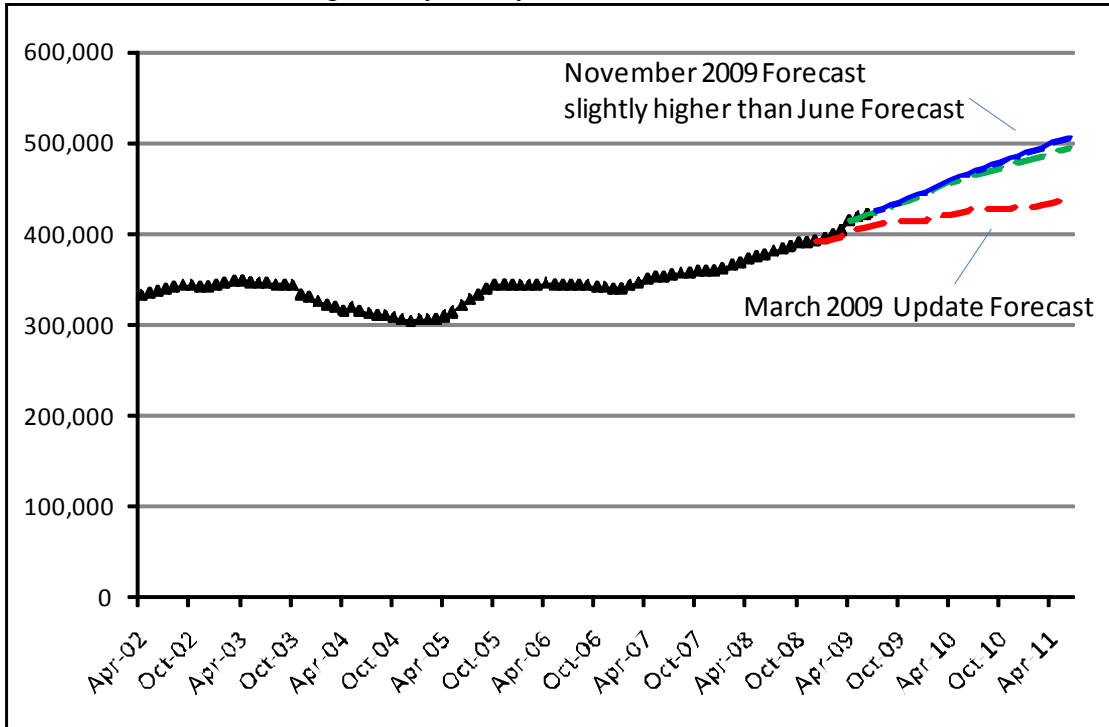
Fiscal Year	Caseload Change	Percent Change		Caseload
2003-2004	-11,921	-3.4%	Actual	338,920
2004-2005	-16,699	-4.9%		322,221
2005-2006	32,845	10.2%		355,066
2006-2007	10,644	3.0%		365,710
2007-2008	33,111	9.1%		398,821
2008-2009	40,370	10.1%		439,191
2009-2010	51,471	11.7%	Forecast	490,662
2010-2011	47,326	9.6%		537,988

The growth rate of medical assistance for children is expected to continue to grow well above the population growth rate through Fiscal Year 2011. This high growth rate is initially attributed to the weak economy, but as the economy strengthens, the growth rate will be bolstered by outreach and efforts to retain eligible children, and transfers from programs with lower income eligibility limits.

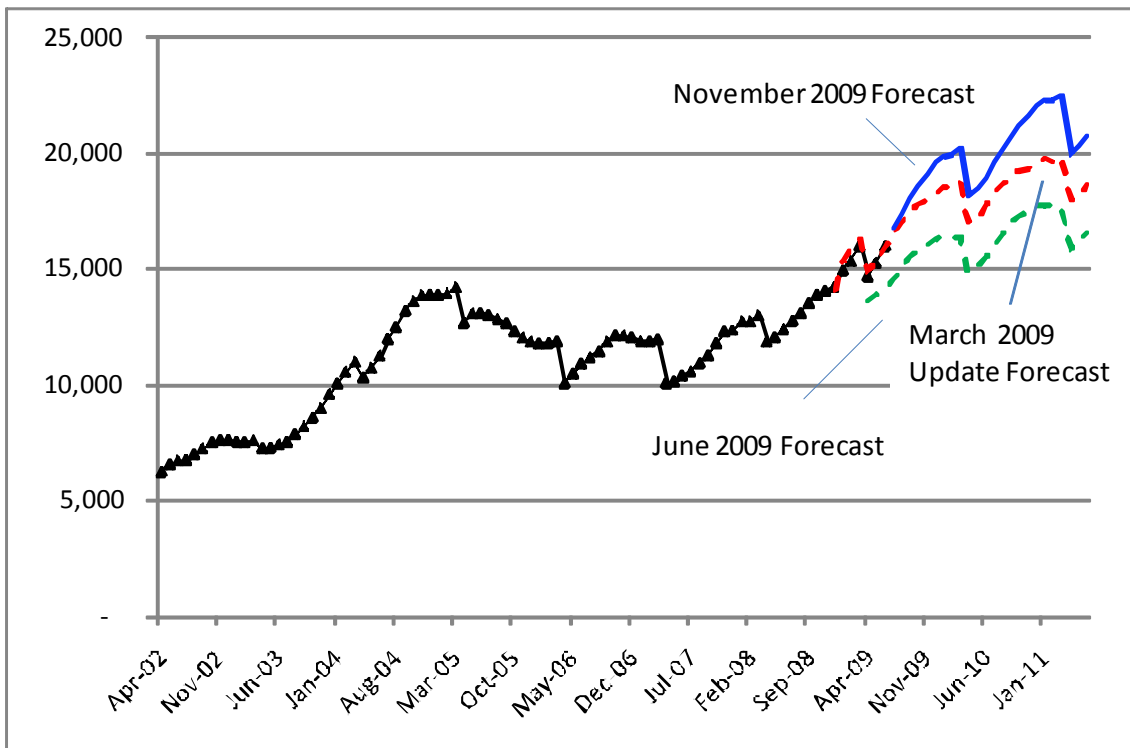
#### Risks to the Forecast

Risks to the HRSA Children's forecast are relatively high. As note above, in the near term medical assistance for children is expected to grow much faster than the underlying population. This is not a stable, long-term situation, and will lead to a growing percentage of the children in the state being covered by Medicaid and state funded health insurance over time. Eventually, this proportion will reach a maximum level, and the growth rate of Children's Medical program will come down to a rate more in line with the population growth rate.

Categorically Needy Other Children Forecast



SCHIP Forecast



CHP Forecast

